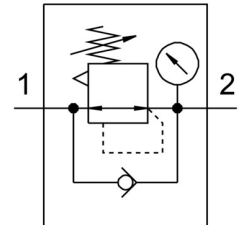


# Pressure regulator MS2-LR-M5-D6-AR-MPA-B

Part number: 8086636

FESTO



## Data sheet

| Feature                          | Value                                                                              |
|----------------------------------|------------------------------------------------------------------------------------|
| Size                             | 2                                                                                  |
| Type code                        | MS2-LR                                                                             |
| Series                           | MS                                                                                 |
| Actuator lock                    | Rotary knob with detent                                                            |
| Mounting position                | Any                                                                                |
| Structural design                | Directly controlled diaphragm regulator                                            |
| Controller function              | Outlet pressure constant<br>With secondary exhausting<br>With return flow function |
| Symbol                           | 00991558                                                                           |
| Displayable unit(s)              | MPa                                                                                |
| Pressure gauge                   | with pressure gauge                                                                |
| Operating pressure               | 0.1 MPa ... 1 MPa                                                                  |
| Operating pressure               | 1 bar ... 10 bar                                                                   |
| Pressure regulation range        | 0.5 bar ... 7 bar                                                                  |
| Max. pressure hysteresis         | 0.25 bar                                                                           |
| Standard nominal flow rate       | 170 l/min                                                                          |
| Operating medium                 | Compressed air as per ISO 8573-1:2010 [7:4:4]<br>Inert gas                         |
| Corrosion resistance class (CRC) | 1 - Low corrosion stress                                                           |
| Storage temperature              | -5 °C ... 50 °C                                                                    |
| Temperature of medium            | -5 °C ... 50 °C                                                                    |
| Ambient temperature              | -5 °C ... 50 °C                                                                    |
| Product weight                   | 39.8 g                                                                             |
| Type of mounting                 | Optionally:<br>Front panel mounting<br>Line installation<br>With accessories       |
| Pneumatic connection 1           | M5                                                                                 |
| Pneumatic connection 2           | M5                                                                                 |
| Note on materials                | RoHS-compliant                                                                     |
| Lower cover material             | PA                                                                                 |
| Seals material                   | NBR                                                                                |
| Rotary knob material             | POM                                                                                |
| Material of spring               | High-alloy steel                                                                   |
| Housing material                 | PA                                                                                 |

| Feature               | Value                  |
|-----------------------|------------------------|
| Diaphragm material    | NBR                    |
| Valve tappet material | Wrought aluminum alloy |
|                       | NBR                    |